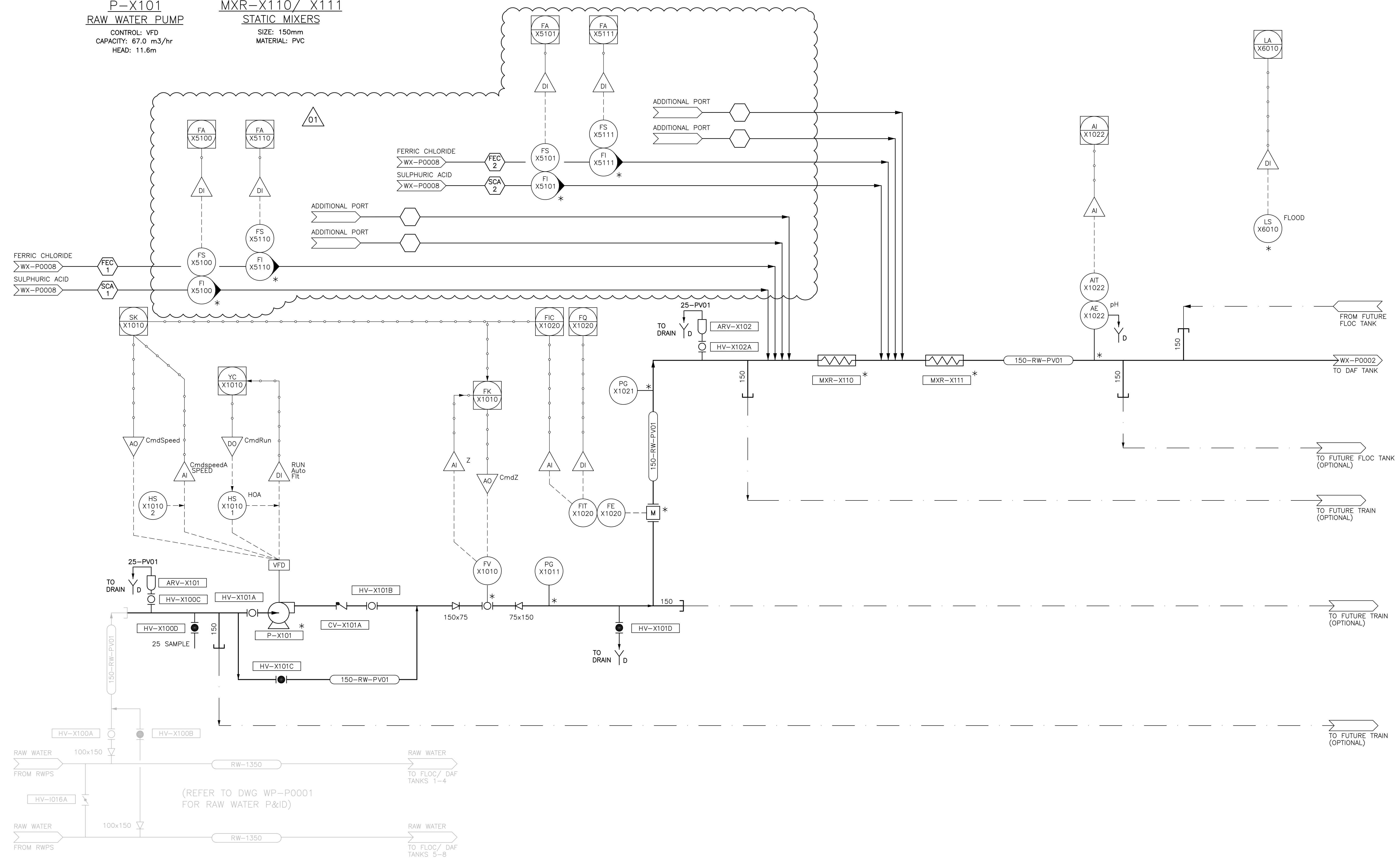


**P-X101
RAW WATER PUMP**

CONTROL: VFD
CAPACITY: 67.0 m³/hr
HEAD: 11.6m

**MXR-X110/ X111
STATIC MIXERS**

SIZE: 150mm
MATERIAL: PVC



NOTES:
* CITY OF WINNIPEG TO SUPPLY EQUIPMENT/ INSTRUMENTATION.
CONTRACTOR TO INSTALL.
DRAIN LINES FROM PROCESS LINES: 25mm PV01



ORIGINAL
SIGNED BY
B.L. MOORE
JUNE 13/14



B.M. ELEV.			
CONSTRUCTION COMPLETION DATE: YYYY MM DD			
DESIGNED BY	KG	CHECKED BY	BW
DRAWN BY	JBC	APPROVED BY	BW
SCALE:	HORIZONTAL NTS	RELEASED FOR CONSTRUCTION	
	VERTICAL -	DATE	2014 06 13
NO.	REVISIONS	DATE	BY
1	ISSUED FOR ADDENDUM No. 1	14/06/24	JBC
0	ISSUED FOR TENDER	14/06/13	JBC

CH2MHILL

DESIGNED BY: KG
CHECKED BY: BW
DRAWN BY: JBC
APPROVED BY: BW
SCALE: HORIZONTAL NTS, VERTICAL -
DATE: 2014 06 13
PLOT DATE: 2014 06 25

ENGINEER'S SEAL
ORIGINAL
SIGNED BY
S.B. WILLIAMSON
14/06/13
CONSULTANT DRAWING NUMBER
WX-P0001

THE CITY OF WINNIPEG
WATER AND WASTE DEPARTMENT
ENGINEERING DIVISION

CITY OF WINNIPEG WATER TREATMENT RESEARCH
AND PROCESS OPTIMIZATION FACILITY
PROCESS
RAW WATER PUMPING
PROCESS AND INSTRUMENTATION DIAGRAM

SHEET X OF X
CITY DRAWING NUMBER
1-0601X-P0001-001-01